



PRODUCT SPECIFICATION

MOUSE MONOCLONAL ANTIBODY REACTIVE WITH PANCREATIC BETA CELLS OF THE RAT AND RIN CELLS

CAT.-NO.	FORMAT	QUANTITY	NET PRICE
AB119A	Ammonium sulphate precipitated mouse IgG	100µg	310.00 €
AB119G	Affinity purified mouse IgG	100µg	447.00 €

Clon K14D10

Isotype IgG2a

Immunogen Porcine Proinsulin

Reactivity The monoclonal antibody is very strongly and specifically binding to a surface structure of viable isolated rat beta cells as demonstrated by FACS. The antibody is also binding on pancreatic cryosections but not on formalin fixed paraffin sections from rat pancreas. The antibody can not be used in Western Blot and for immunoprecipitation. The antibody is not reactive with beta cells from mouse islets. The cross reactivity with human pancreatic beta cells was not detected.

Host Mouse

Format Liquid in PBS, pH 7.4, containing 0.9mg/ml sodium azide

Quantity 100µg

Concentration 0.5mg/ml

Application Cell sorting, Flow cytometrie, Immunofluorescence

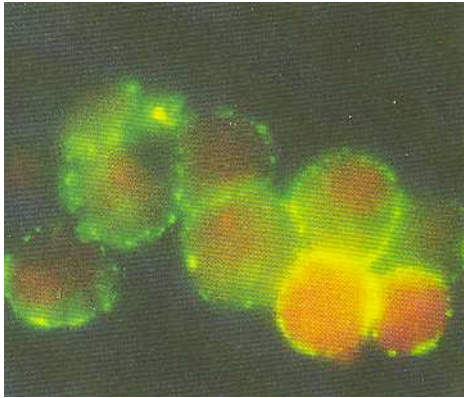
Short term storage +4°C

Long term storage -20°C

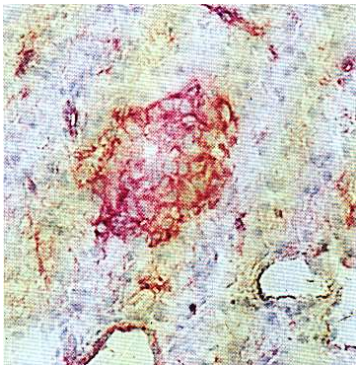
Use/Stability Stable for at least 1 year when stored at +4°C

Handling Avoid freeze/thaw cycles

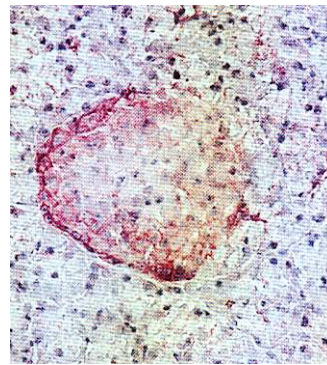
Note For *in vitro* research use only, not for therapeutic or diagnostic use.



Immunostaining of the surface of viable rat insulinoma beta cells by incubation with the monoclonal antibody K14D10 using indirect immunofluorescence technique.



Reactivity of the antibody in vitro on islets of pancreatic cryosections of NEDH rats.



The binding of K14D10 in the islets of NEDH rats in vivo was detected on pancreatic cryosections 24h after application of 1ml K14D10 ascites immunostained by the use of alkaline phosphatase anti alkaline phosphatase method.

References: Ziegler B, Lucke S, Köhler E, Hehmke B, Schlosser M, Witt S, Besch W, Ziegler M: Monoclonal antibody-mediated cytotoxicity against rat Beta cells detected in vitro does not cause Beta-cell destruction in vivo. *Diabetologia* 35 (1992) 608-613.

Schlosser M, Witt S, Ziegler B, Ziegler M: Influence of target cell preparation on binding of monoclonal islet cell reactive antibodies (mc-ICRA) in cellular enzyme linked immunosorbent assay (CELISA). *J Immunol Meth* 140 (1991) 101-109.

Kuttler B, Wanka H, Hahn H-J: Co-culture of pancreatic islets and allogeneic lymphocytes. Alternations of responder and stimulator cells. *Transplantation* 64 (1997) 480-489.

Kuttler B, Wanka H, Hahn H-J: recognition of islet-directed peripheral blood lymphocytes in vivo before rejection of allogeneic grafted islets. *Transplantation* 69 (2000) 1987-1990.

Hadjivassilion V, Green M. H. I., Green I.C.: Immunomagnetic purification of beta cells from rat islets of Langerhans. *Diabetologia* 43 (2000) 1170-1177.